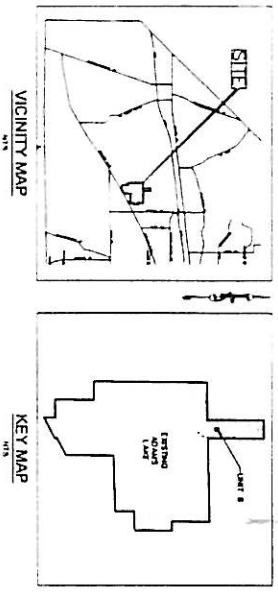


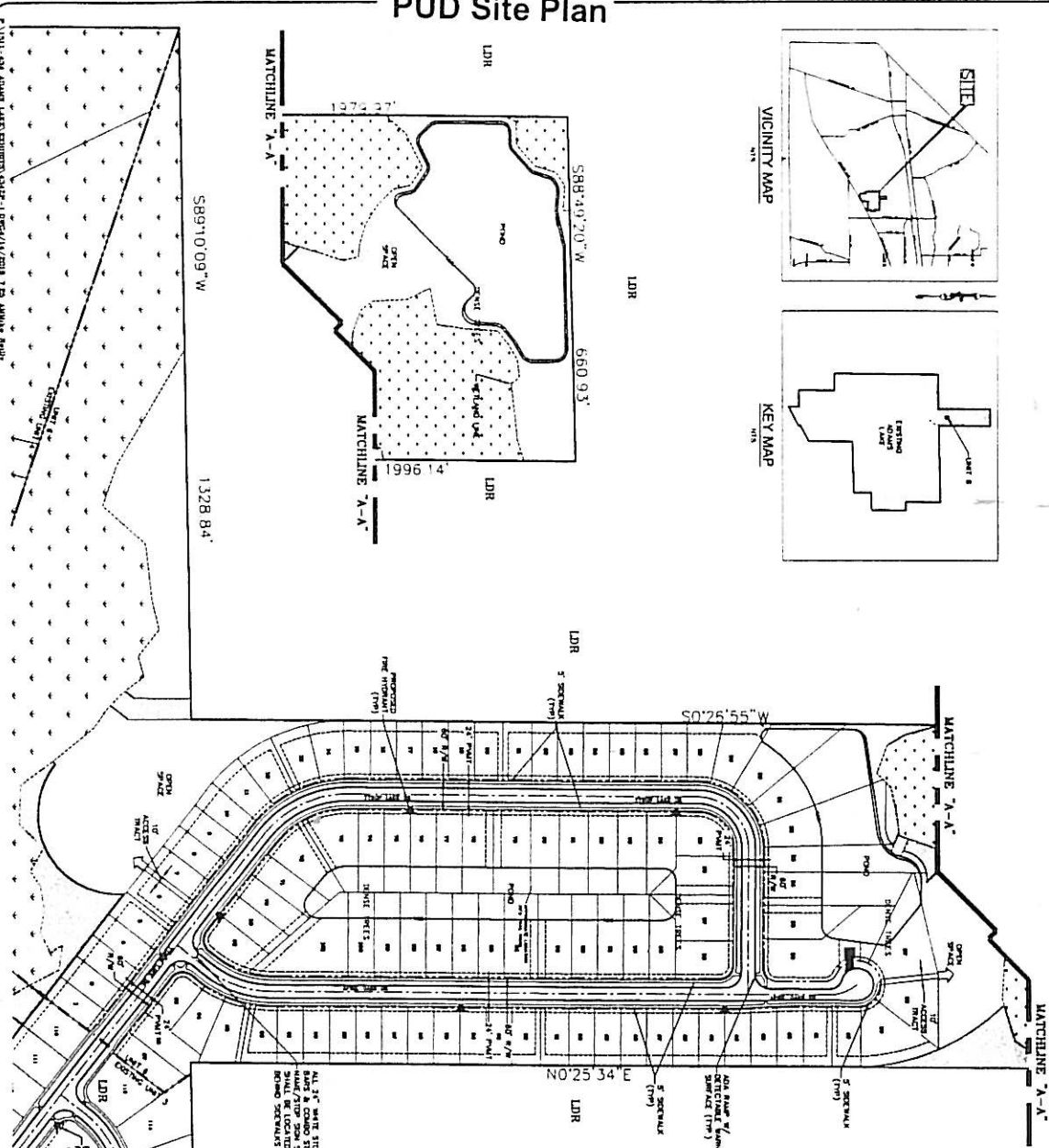
EXHIBIT E

PUD Site Plan



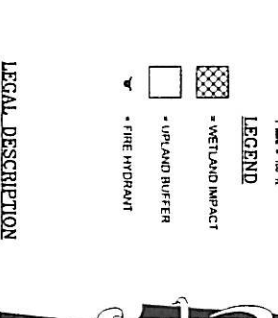
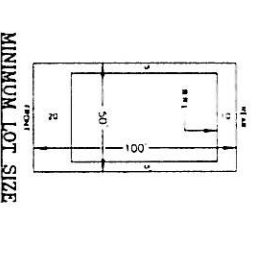
NO	DATE	REVISIONS	BY	DESIGNED BY

BY	SA/SS/NS/NR	DESIGNED BY	DAI



Dunn & Associates, Inc.
 PROFESSIONAL ENGINEER
 STATE OF FLORIDA
 License No. 32726
 1100 N. W. 11th Street, Suite 102
 Ft. Lauderdale, Florida 33304
 Phone: (954) 561-5555
 Fax: (954) 561-5551
 www.dunneng.com

ADAMS LAKE UNIT 6
 ADAMS LAKE UNIT 6
 DIVAL COUNTY, FLORIDA
 ZONING PLAN



NO.	DESCRIPTION
1	CONTRACTOR SHALL MAINTAIN THE EXISTING SITE CHARACTERISTICS AND NOT REMOVE OR DESTROY ANY REMAINING NATURAL FEATURES OR PLANTS AND TREES.
2	THE CONTRACTOR SHALL MAINTAIN THE EXISTING SITE CHARACTERISTICS AND NOT REMOVE OR DESTROY ANY REMAINING NATURAL FEATURES OR PLANTS AND TREES.
3	THE CONTRACTOR SHALL MAINTAIN THE EXISTING SITE CHARACTERISTICS AND NOT REMOVE OR DESTROY ANY REMAINING NATURAL FEATURES OR PLANTS AND TREES.
4	THE CONTRACTOR SHALL MAINTAIN THE EXISTING SITE CHARACTERISTICS AND NOT REMOVE OR DESTROY ANY REMAINING NATURAL FEATURES OR PLANTS AND TREES.
5	THE CONTRACTOR SHALL MAINTAIN THE EXISTING SITE CHARACTERISTICS AND NOT REMOVE OR DESTROY ANY REMAINING NATURAL FEATURES OR PLANTS AND TREES.
6	THE CONTRACTOR SHALL MAINTAIN THE EXISTING SITE CHARACTERISTICS AND NOT REMOVE OR DESTROY ANY REMAINING NATURAL FEATURES OR PLANTS AND TREES.
7	THE CONTRACTOR SHALL MAINTAIN THE EXISTING SITE CHARACTERISTICS AND NOT REMOVE OR DESTROY ANY REMAINING NATURAL FEATURES OR PLANTS AND TREES.
8	THE CONTRACTOR SHALL MAINTAIN THE EXISTING SITE CHARACTERISTICS AND NOT REMOVE OR DESTROY ANY REMAINING NATURAL FEATURES OR PLANTS AND TREES.
9	THE CONTRACTOR SHALL MAINTAIN THE EXISTING SITE CHARACTERISTICS AND NOT REMOVE OR DESTROY ANY REMAINING NATURAL FEATURES OR PLANTS AND TREES.
10	THE CONTRACTOR SHALL MAINTAIN THE EXISTING SITE CHARACTERISTICS AND NOT REMOVE OR DESTROY ANY REMAINING NATURAL FEATURES OR PLANTS AND TREES.

FLOOD ZONE
 THE PROPERTY SHOWN HEREON IS LOCATED WITHIN THE FLOOD HAZARD ZONING DISTRICT OF DIVAL COUNTY, FLORIDA. THE SHOWN FLOOD ZONE IS BASED ON THE FLOOD HAZARD ZONING MAP OF DIVAL COUNTY, FLORIDA.

LEGEND
 [Symbol] = WETLAND BUFFER
 [Symbol] = WETLAND IMPACT
 [Symbol] = UPLAND BUFFER
 [Symbol] = FIRE HYDRANT

CHARTING SCALE
 1" = 100' N.T.S.

CENS = 34372
 CEN = 50721009

NOT RELEASED FOR CONSTRUCTION